

# OFFICE OF THE MAYOR

February 10, 2022



Lisa Carroll-Lambert, City Clerk  
C J Small, President, Mobile City Council

Dear Lisa and Council President, Small:

According to section 11-44C-90 of the Zoghby Act, I am hereby filing with you the recommended plan for reapportionment of the seven City Council districts.

The 1985 Legislative Act that created our Mayor – Council form of government requires that the seven council districts be reapportioned to equalize population and to provide fair and equal representation to all citizens of Mobile whenever a decennial census evidences a change in population. Because the recently compiled decennial census evidenced changes in the population of our seven districts, and evidenced a shift in population to the west, reapportionment of the seven council districts was necessary.

The recommended plan that I am delivering today in accordance with the 1985 Legislative Act complies with the requirements of applicable State and Federal laws. The recommended plan respects, to the extent reasonably practicable, the traditional district boundaries that were originally created by the Legislature in 1985. As required by State law, each district is formed of contiguous and compact territory.

Each district also contains as nearly as is reasonable the same population centered on a targeted mean of 26,720 citizens in each district. While the recommended plan proposes districts varying between total populations of 25,400 citizens and 28,024 citizens, the variances between districts fall within generally accepted and permissible levels.

The recommended plan establishes, for the first time in our history, four council districts that are majority Black in terms of both total population and voting age population. In doing so, the plan allows for fair and equal representation and provides an equal opportunity for all citizens to elect council representatives of their choice.

Sincerely,

A handwritten signature in blue ink that reads 'William S. Stimpson'.

William S. Stimpson  
Mayor

Cc: Mobile City Councilors

**AN ORDINANCE TO PROVIDE FOR THE REAPPORTIONMENT OF THE SEVEN COUNCIL DISTRICTS FOR THE CITY OF MOBILE**

Sponsored by: \_\_\_\_\_

WHEREAS, section 11-44C-13 of the Code of Alabama provides that the Council’s seven members shall be elected from districts which shall be, as near as practicable, of equal population according to the last decennial census; and,

WHEREAS, section 11-44C-90 of the Code of Alabama requires that the seven council districts are to be reapportioned following a decennial census to account for changes in the population of the districts; and,

WHEREAS, based upon the results of the last decennial census the Council finds that reapportionment of the Council districts is necessary to provide fair and equal representation to all of the citizens of the City of Mobile; and,

WHEREAS, the Council finds that reapportionment of the Council districts as provided in this Ordinance will achieve the goal of equally apportioning the City’s population so as to provide fair and equal representation to all citizens of the City of Mobile.

NOW, THEREFORE, BE IT RESOLVED BY THE CITY COUNCIL OF THE CITY OF MOBILE, ALABAMA, AS FOLLOWS:

SECTION ONE: The seven city council districts shall be as follows:

**A. DISTRICT ONE shall consist of: in Mobile Division, Mobile County:**

Council District	2020 Census Tract	2020 Census Blocks
1	600	2011   2012   2010
1	701	1000   1001   1002   1003   1004   1005   1006   1007   1008   1009   1010   1011   1012   1013   2000   2001   2002   2003   2004   2005   2006   2007   2008   2009   3000   3001   3002   3003   3004   3005   3006
1	702	2004   2005   2006   2007   2008   2009   2010   2011   2012   2013   2014   2015   3005   3006   3007   3008   3009   3010   1001   1002   1003   1004

		1006   1007   1008   1009   1010   1011   1012   1014   1015   1016   1017   1018   1019   1020   1021   1022   1023   1024   1025   2000   2001   2002   2003   2016   3001   3002   3003   3004
1	801	1000   1001   1002   1003   1004   1005   1006   1007   1008   1009   1010   1011   1012   2000   2001   2002   2003   2004   2005   2006   2007   2008   2009   2010   2011   2012   2013   2014   2015   2016   2017   2018   2019   2020   2021   2022   2023   2024   2025   2026   2027   2028   3000   3001   3002   3003   3004   3005   3006   3007   3008   3009   3010   3011   3012   3013   3014   3015   3016   3017   3018   3019
1	802	1000   1001   1002   1003   1004   1005   1006   1007   1008   1009   1010   1011   2000   2001   2002   2003   2004   2005   2006   2007   2008
1	901	1021
1	2501	1006   2000   2001   2002   2003   2004   2005   2006   2007   2008   2009   2015   3000   3001   3003   3004
1	2502	1003   1004   1005   1006   1007   1008   1009   1010   1012   1013   1014   1015   1016   2000   2001   2002   2003   2004   2005   2006   2007   2008   2009   3001   3005   3006   3007   3008   3009   3010   3011   3012   3013   3014   3015   3016   3017   3018   3019   3020   3021   3022   3023   3024   3025   3026   3027   3028   3029   3030   3031   3032   3033   3034   3035   3036   3037   1000   1001   1011   3000   3002   3003   3004
1	2600	2004   3000   3001   3002   3003   3004   3005   3006   3008   3009   3010   3011   3012   3013   3014   3015   3016   3017   3018   3019   3020   3021   3022   3023   3024   3025   3026   3027   3028   3029   3030   3031   3032   3033   3034   3035   3036   3037   1000   1001   1002   1003   1004   1005   1006   1007   1008   2000   2001   2002   2003   2005   2006   2007   2008   2009   2010   2011   2012   2013   2014   2015   2016   2017   2018   2019   2020   3007
1	2700	1018   1021   1022   1023   1024   1025   1026   1027   1028   1030   2013   2014   2028   2029   2030   2031   2032   2033   2034   2035   2036   2037   2038   2039   2040   2041   2042   1006   1007   1008   1009   1010   1011   1012   1013   1014   1015   1016   1017   1029   2000   2002   2003   2004   2005   2006   2007   2008   2009   2010   2011   2015   2016   2017   2018   2019   2020   2021   2022   2023   2024   2025   2026   2027   1000   1003   1019   1020   1031   1032   1033   1034   1035   1036   1037   1038   1039   1040   1041   1042   1043   1044   1045   1046   1001   1002   1004   1005
1	2800	1004   1006   1007   1008   1009   1010   1011   1012   1015   5000   5001   5002   5003   5004   5005   5006   5007   5008   5009   5010   5011   5012   5013   5014   5015   1000   1001   1002   1003   1005   1013   1014   3010
1	3302	1000   1002   1003   1004   1005   1006   1007   1022   1023   1024   1025   1028   1029   1030   1031   1032   1033   1034   1035   1036   1037   1038   1001   1008   1009   1010   1011   1012   1013   1014   1015   1016   1017   1018   1019   1020   1021   1039   1040
1	3402	1003   1004   1005   1006   1007   1008   1009   1010   1011   1012   1013   1014   1015   1016   2002   2003   2004   2005   2006   2007   2008   2009   2014   2015   2016   2017   2018   2019   2020   2021   2022   2023   2024   2025   2026   2027   2028   2029   2030   2031   2010   2011

1	3901	1007   1008   1009   1010   1011   1012   1013   1014   1015   1018   1019   1020   1021   1022   1028   1034   1035   1036   1037   1038   1039   1040   1041   1042   1043   1044   2000   2001   2002   2003   2004   2005   2006   2007   2008   2009   2010   2011   2012   2013   2014   2015   2016   2017   2018   2019   2020   2021   2022   2023   2024   2025   2026   2027   2028   1029   1031   1032   1033
1	3902	1026   1027   1001   1002   1007   1008   1009   1010   1011   1012   1013   1014   1015   1024   1025   1028   1029   1030   1031   1032   1033   1034   1035
1	4900	4018   4019

**B. DISTRICT TWO shall consist of: in Mobile Division, Mobile County:**

Council District	2020 Census Tract	2020 Census Blocks
2	200	1000   1001   1002   1003   1004   1005   1006   1007   1008   1009   1010   1011   1012   1013   1014   1015   1016   1017   1018   1019   1020   1021   1022   1023   1024   1025   1026   1027   1028   1029   1030   1031   1032   1033   1034   1035   1036   1037   1038   1039   1040   1041   1042   1043   1044   1045   1046   1047   1048   1049   1050   1051   1052   1053   1054   1055   1056   1057   1058   1059   1060   1061   1062   1063   1064   1065   1066   1067   1068   1069   1070   1071   1072   1073   1074   1075   1076   1077   1078   1079   1080   1081   1082   1083   1084   1085   1086   1087   2008   2010   2016   2017   2018   2019   2020   2021   2022   2023   2025   2026   2027   2028   2029   2030   2031   2032   2033   2034   2035   2036   2037   2038   2039   2040   2041   2042   2043   2044   2045   2046   2047   2048   2049   2050   2051   2052   2053   2054   2055   2056   2057   2058   2059   2060   2061   2062   2063   2064   2065   2066   2067   2068   2069   2070   2071   2072   2073   2074   2075   2076   2077   2078   2079   2080   2081   2082   2083   2084   2085   2086   2087   2088   2089   2090   2091   2092   2093   2000   2001   2002   2003   2004   2005   2006   2007   2009   2011   2012   2013   2014   2015   2024
2	401	3015   3019   3020   2012   2014   2015   2016   2018   2019   2020   2021   2022   2023   2024   2025   2026   2027   3010   3016   3017   3018   3004   3005   3006   3007   3012   3013   3014   4005   4015   4016   1000   1001   1002   1003   1004   1005   1006   1007   1008   2000   2001   2002   2003   2004   2005   2006   2007   2008   2009   2010   2011   2013   2017   3000   3001   3002   3003   3008   3009   3011   4000   4001   4002   4003   4004   4006   4007   4008   4009   4010   4011   4012   4013   4014   4017   4018   4019   4020   4021

2	402	1000   1001   1002   1003   1004   1005   1006   1007   1008   1009   1010   1011   1012   1013   1014   1015   1016   1017   1018   1019   1020   1021   1022   1023   1024   1025
2	500	2009   2014   2015   1000   1002   1003   1004   1005   1006   1007   1008   1009   1010   1011   1012   1013   1014   1015   1016   1017   1018   1019   1020   1021   1022   1023   1024   1025   1026   1027   1028   1029   1030   1031   1032   1033   1034   1035   1036   1037   1038   1039   1040   1041   1042   1043   1044   1045   1046   1047   1048   1049   1050   1051   2000   2001   2002   2003   2004   2005   2006   2007   2008   2010   2011   2012   2013   1001
2	600	1000   1001   1002   1003   1004   1005   1006   1007   1008   1009   1010   1011   1012   1013   2000   2001   2002   2003   2004   2005   2006   2007   2008   2009   2013   2014   2015
2	901	1007   1008   1009   1011   1012   1014   1015   1016   1017   1018   1019   1020   1022   1023   1024   1025   1026   1027   1028   1029   1030   1031   1032   1033   1034   1035   1036   1037   1038   1039   1040   2000   2001   2002   2003   2004   2005   2006   2007   2008   2009   2010   2011   2012   1000   1001   1002   1003   1004   1005   1006   1010   1013
2	902	1000   1001   1002   1003   1004   1005   1006   1007   1008   1009   1010   1011   1012   1013   1014   1015   2000   2001   2002   2003   2004   2005   2006   2007   2008   2009   2010   2011   2012   2013   2014   2015   2016   2017   2018   2019   2020   2021   2022   2023   2024   2025
2	903	1000   1001   1002   1003   1004   1005   1006   1007   1008   1009   1010   1011   1012   1013   1014   1015   1016   1017   1018   1019   1020   1021   1022   1023   1024   1025   1026   1027   1028   1029   1030   1031   1032   1033   1034   1035
2	1001	1004   1013   2005   2014   1000   1001   1002   1003   1005   1006   1007   1008   1009   1010   1011   1012   1014   2000   2001   2002   2003   2004   2006   2007   2008   2009   2010   2011   2012   2013   2015   2016   2017   2018   2019   2020   2021   2022   2023   2024   2025
2	1002	1014   1016   1017   1018   1019   2025   2026   2027   2028   2029   2030   2031   2032   2037   2038   2039   2040   1000   1001   1002   1003   1004   1005   1006   1007   1008   1009   1010   1011   1012   1013   1015   1020   1021   1022   1023   1024   1025   1026   1027   1028   1029   1030   2000   2001   2002   2003   2004   2005   2006   2007   2008   2009   2010   2011   2012   2013   2014   2015   2016   2017   2018   2019   2020   2021   2022   2023   2024   2033   2034   2035   2036   2041
2	1100	1000   1001   1002   1003   1004   1005   1006   1007   1008   1009   1010   1011   1012   1013   1014   1015   1016   1017   2000   2001   2002   2003   2004   2005   2006   2007   2008   2009   2010   2011   2012   2013   2014   2015   2016   2017   2018   2019   2020   3000   3001   3002   3003   3004   3005   3006   3007   3008   3009   3010   3011   3012   3013   3014   3015   3016   3017   3018
2	1200	1003   1012   1013   1014   1015   1018   1019   1020   1021   1022   1023   1108   1109   1110   1111   1112   1113   1114   1115   1116   1117   1119   1120   1121   1122   1123   1124   1125   1126   1127   1128   1129   1130   1131   1132   1133   1134   1135   1136   1137   1138   1139   1140   1141

		1142   1143   1144   1145   1146   1147   1148   1149   1150   1151   1152   1153   1154   1155   1158   1160   1184   1185   1194   1204   1207   2000   1077   1084   1202   1048   1049   1050   1051   1056   1057   1062   1063   1064   1065   1066   1067   1068   1069   1072   1075   1076   1078   1186   1187   1188   1189   1190   1191   1192   1193   1201   1002   1004   1005   1006   1024   1025   1026   1027   1028   1029   1030   1031   1032   1033   1034   1035   1036   1037   1038   1039   1040   1041   1042   1043   1044   1045   1046   1047   1052   1054   1055   1079   1080   1081   1082   1083   1085   1086   1087   1088   1089   1090   1091   1092   1093   1094   1095   1096   1097   1098   1099   1100   1101   1102   1103   1104   1105   1106   1107   1199   1200   1203   1205   1206   1000   1007   1008   1010   1011   1016   1017   1183   1001   1009
2	1400	1028   1030   1032   1033   1034   1035   1036   2000   2001   2002   2003   2004   2005   2006   2007   2008   2009   2010   2011   2012   2013   2014   2015   2016   2017   2018   2019   2020   2021   2022   2023   2024   2025   2026   2027   3000   3001   3002   3003   3004   3005   3006   3007   3008   3009   3010   3011   3012   3013   3014   3015   3016   1000   1001   1002   1003   1004   1005   1006   1007   1008   1009   1010   1011   1012   1013   1014   1015   1016   1017   1018   1019   1020   1021   1022   1023   1024   1025   1026   1027   1029   1031
2	1501	1000   1001   1002   1003   1004   1005   1006   1007   1008   1009   1010   1011   1012   1013   1014   1015   1016   1017   1018   1019   1020   1021   1022   1023   1024   1025   1026
2	2100	1000   1001   1002
2	2200	1000   1001   1002   1003   1004   1005
2	2302	2000   2001   2002   2006
2	2400	1019   1020   1021   1022   1023   1024   1025   1026   1027   1028   1029   1030   1031   2007   2008   2009   2010   2016   2017   2018   2019   2020   3003   3004   3005   3008   3009   3010   3011   3014   3015   3017   3018   3019   3020   3021   3022   3023   3024   3025   3026   1000   1001   1002   1003   1004   1005   1006   1007   1008   1009   1010   1011   1012   1013   1014   1015   1016   1017   1018   1032   2000   2001   2002   2003   2004   2005   2006   2011   2012   2013   2014   2015   2024   3000   3001   3002   3006   3007
2	2501	1000   1001   1002   1003   1004   1005   1007   1008   1009   1010   1011   1012   1013   1014   1015   1016   1017   1018   1019   1020   1021   1022   1023   1024   1025   1026   1027   2010   2011   2012   2013   2014   2016   2017   2018   2019   2020   2021   2022   2023   2024   2025   2026   2027   2028   2029   2030   2031   2032   2033   3002   3005   3006   3008   3009   3010   3011   3014   3015   3016   3025
2	2502	1002
2	3800	1128   1136   1137   1104   1114   1115   1116   1117   1129   1130   1131   1132   1133   1134   1135   1138   1139   1140   1141   1142   1143   1144   1145   1146   1147   1148   1149   1150   1151   1152   1153   1154   1155   1156   1066   1098   1102   1118   1124   1125   1126   1166   1081   1082   1083   1084   1085   1086   1087   1088   1096   1103   1105   1106   1107   1108   1109   1173   1065   1067   1069   1089   1095   1080   1045   1046

		1047   1048   1051   1062   1063   1070   1071   1072   1073   1075   1076   1077   1078   1079   1175   1049   1050   1168   1170
2	5200	1000   1042
2	5300	1044   1045
2	5602	2022   2025   2030
2	7600	1000   1015   2017   2040   2000   2001   2003   2004   2016
2	7700	1004   1008

**C. DISTRICT THREE shall consist of: in Mobile Division, Mobile County:**

<b>Council District</b>	<b>2020 Census Tract</b>	<b>2020 Census Blocks</b>
3	1200	1118   1156   1157   1159   1161   1162   1163   1164   1165   1166   1167   1168   1169   1170   1171   1172   1173   1174   1175   1176   1177   1178   1179   1180   1181   1182   2001   2002   2003   2004   2005   2006   2007   2008   2009   2010   2011   2012   2013   2014   2015   2016   2017   2018   2019   2020   2021   2022   2023   2024   2025   2026   2027   2028
3	1302	1009   1010   1011   1029   1030   1031   1032   1033   1034   1035   2000   2001   2002   2003   2004   2005   2006   2007   2008   2009   2010   2011   2012   2013   2014   2015   2016   2017   2018   2019   2020   2021   2022   2023   2024   2025   2026   2027   2028   2029   2030   2031   2032   2033   2034   2035   2036   2037   2038   3004   3008   3009   3018   3019   1005   1006   1007   1008   1000   1001   1002   1003   1004   1012   1013   1014   1015   1016   1017   1018   1019   1020   1021   1022   1023   1024   1025   1026   1027   1028   3000   3001   3002   3003   3005   3006   3007   3010   3011   3012   3013   3014   3015   3016   3017   3020   3021   3022
3	1501	1027   1028   2000   2001   2002   2003   2004   2005   2006   2007   2008   2009   2010   2011   2012   2013   2014   2015
3	1502	1000   1001   1002   1003   1004   1005   1006   1007   1008   1009   1010   1011   1012   1013   1014   1015   1016
3	1800	1000   1001   1002   1003   1004   1005   1006   1007   1008   1011   1012   1013   1014   1015   1016   1017   1018   1019   1020   2001   2002   2003   2004   2005   2006   2007   2008   2010   2011   2012   2013   2014   2015   2016   2017   2018   2019   2020   2021   2000   2009
3	1901	1004   1006   1007   1008   2000   2001   2002   2003   2004   2005   2006   2007   2009   2010   2011   2012   2013   2015   2016   1000   1001   1002   1003   1005
3	1902	2003   2000   2001   2002   2004   2005   2006   2007   2012   2013   1000   1001   1002   1003   1004   1005   1006   1007   1008   1009   1010   1011   1012   1013   1014   1015   1016   1017   1018   1019   1020   2008   2009   2010   2011   3000   3001   3002   3003   3004   3005   3006   3007   3008   3009   3010

3	2000	2000   2001   2006   2003   2004   2027   2038   1000   1001   1002   1003   1004   1005   1006   1007   1008   1009   1010   1011   2002
3	2100	2006   2007   2008   2009   2010   2011   2012   2013   2014   3000   3001   3002   3003   3004   3005   3006   3008   3009   3010   3011   3012   3013   3014   3015   3016   3017   3018   2005   3007   1003   1004   1005   1006   1007   1008   1009   1010   1011   1012   1013   2001   2002   2003   2004   1014   1015   2000
3	2200	2000   2001   2002   2003   2004   2005   2006   2007   2008   2009   2010   2011   2012   3007   3009   3011   1006   1007   1008   1009   1010   1011   1012   1013   3000   3001   3002   3003   3004   3005   3006   3008   3010   3012   3013
3	2301	1002   1003   1004   1005   1006   1007   1008   1009   1010   1011   1012   1013   1000   1001   2000   2001   2002   2003   2004   2005   2006   2007   2008   2009   2010   2011   2012   2013   2014   2015   2016   2017   2018   2019   2020   2021   2022   2023   2024   2025   2026   2027   2028
3	2302	1009   1010   1011   1012   1013   1015   1016   1000   1001   1002   1003   1004   1005   1006   1007   1008   1014   2003   2004   2005   2007   2008   2009
3	2400	2021   2022   2023
3	7000	1001   1018   1020   1021   1030
3	7400	2000   2001   2003   2005   2006   2007   2015   2016   3002   3003   3004   3005   3006   3008   3009   3011   3012   3013   3014   3015   3016   3017   3018   1011   1015   1016   1018   1019   1022   1023   1024   1026   1045   1046   1048   1049   1053   1054   1055   1056   2002   2004   2008   2009   2010   2011   2012   2013   2014   3000   3001   3007   3010   4000   4001   4002   4003   4004   4005   4006   4007   4008   4009   4010   4011   4012   4013   4014   4015   4016   4017   4018   4019   4020   4021   4022   4023   1002   1005   1006   1010   1012   1013   1014   1017   1020   1021   1060   1061   1062   1009   1025   1027   1028   1029   1030   1031   1032   1033   1034   1035   1036   1037   1038   1039   1040   1041   1042   1043   1044   1047   1050   1051   1052   1059   1000   1001   1003   1004   1007   1008   1057   1058
3	990000	0001   0002

**D. DISTRICT FOUR shall consist of: in Mobile Division, Mobile County:**

Council District	2020 Census Tract	2020 Census Blocks
4	2000	2024   2028   2005   2007   2008   2009   2010   2011   2012   2013   2014   2015   2016   2017   2018   2019   2020   2021   2022   2023   2025   2026   2030   2031   2032   2033   2034   2035   2036

4	2900	2007   2008   2017   2018   2019   2020   2021   2022   2023   2024   2025   3034   3035   3036
4	3000	1016   1017   1019   1020   1021   1022   1023   1028   1029   1030   1031   1032   1033   1034   1035   1036   1037   1038   1039   1040   1041   1045   1000   1001   1002   1003   1004   1005   1006   1007   1008   1009   1010   1011   1012   1013   1014   1015   1018   1024   1025   1026   1027   1042   1043   1044   1046   1047   2003   2004   2005   2006   2007   2008   2009   2010   2011   2012   2013   2014   2015   2016   2017   2018   2019   2020   2021   2022   2023   2024   2025   2026   2027   2028   2029   2000   2001   2002
4	3100	1005   1008   1009   1010   1011   1012   1013   1014   1015   1017   1018   1019   1020   1021   1022   1023   1024   1026   2010   2012   2013   2014   2016   2017   2023   1000   1001   1002   1003   1004   1006   1007   1016   1025   2018   2019   2020   2021   2022   3021   3022   3023   3026   3027   3028   3029   3030   2007   2008   2009   2011   2015   2000   2001   2002   2003   2004   2005   2006   3000   3001   3002   3003   3004   3005   3006   3007   3008   3009   3010   3011   3012   3013   3014   3015   3016   3017   3018   3019   3020   3024   3025
4	3707	1000   1001   1002   1003   1004   1005   1006   1007   1008   1009   1010   1011   1012   1013   1014   1015   1016   1017   1018   1019   1020   1021   1022   1023   1024   1025   1026   1027   1028   1029   1030   1031   1032   2000   2001   2002   2003   2004   2005   2006   2007   2008   3000   3001   3002   3003   3004   3005   3006   3007   3008   3009
4	3710	1004   1005   1006   1007   1008   1011   1012   1013   1014   1015   1016   1017   1018   1019   1020   1021   1022   2000   2001   2002   2003   2004   2005   3000   3001   3002   3003   3004   3005   3006   3007   3008   3009   3010   3011   3012   3013   3014   3015   3016   3017   3018   3019   3020   3021   3022   3023   3024   3025   3026   3027   3028   3029   3030   3031   3032   3033   3034   3035   1000   1001   1002   1003   1009   1010
4	3711	1000   1001   1002   1003   1004   1005   1006   1007   1008   1009   1010   1011   1012   1013   1015
4	3712	1000   1001   1002   1003   1004   1005   1006   1007   1008   1009   1010   1011   1012   1013   1014   1015   1016   1017   1018   1019   2000   2001   2002   2003   2004   2005   2006   2007   2008   2009   2010   2011   2012   2013   2014   2015   3000   3001   3002   3003   3004   3005   3006
4	6802	1022   2000   2007   2008   2013   2014   2015   2016   3014   3016   3018   3019   3020   3021   3022   3023   3024   3025   3026   3027   3028   3029   3030   3031   3032   3033   3000   3001   3002   3004   3005   3007   3008   3009   3010   3011   3015   3017
4	6902	1000   1001   1009   1010   1011   1021
4	7000	4030   3001   3002   3008   3011   3012   3013   3014   3015   3016   3017   3018   3019   3045   3046   3047   3048   3049   3050   3051   3053   2010   2011   2013   2014   2015   2016   2017   2018   2019   2020   2021   2022   2023   2026   2027   2028   2029   2030   2031   2032   2033   2034   2035   2036   2037   3000   3003   3004   3005   3006   3007   3009   3010   3020   3021   3022   3023   3024   3025   3026   3027   3028   3029   3030   3031   3032   3033   3034   3039   3041   3042   3043   3044   3052   4020   4021

		4022   4027   4028   2000   2001   2002   2003   2004   2005   2006   2007   2008   2009   2012
4	7101	3008   2000   2001   2002   2005   2014   2015   2016   2017   3000   3006   3007
4	7102	1010   1011   1012   1013   1014   1015   1016   1017   1018   1019   1021   1022   1025   1026   1029   1034   1035   1037   2000   2001   2002   2003   2005   2006   2007   2011   1003   1004   1005   1006   1007   1008   1009   1000   1001   1002
4	7103	1002   1005   1000   1001

**E. DISTRICT FIVE shall consist of: in Mobile Division, Mobile County:**

<b>Council District</b>	<b>2020 Census Tract</b>	<b>2020 Census Blocks</b>
5	2400	3013   3016   3012
5	2501	3007   3012   3013   3017   3018   3019   3020   3021   3022   3023   3024
5	2800	2002   2003   2004   2006   2007   2008   2009   3000   3001   3004   3005   3006   3007   3008   3009   4000   4001   4002   4003   4004   4005   4006   4007   4008   4009   4010   4011   4012   4013   4014   4015   4016   4017   4018   4019   5016   5017   5018   2000   2001   2005   3002   3003
5	2900	1009   1010   1011   1013   1014   1015   2000   2001   2002   2003   2004   2005   2006   2009   2010   2011   2012   2013   2014   2015   2016   3003   3004   3005   3007   3008   3010   3011   3012   3013   3014   3015   3016   3017   3018   3019   3023   3025   3026   3028   3030   3031   3032   3033   3037   1000   1001   1002   1003   1004   1005   1006   1007   3000   3001   3002   3006   3009   3020   3021   3022   3024   3027   3029   1008   1012
5	3202	1000   1001   1002   1003   1004   1005   1006   1007   1008   1009   1010   1011   1014   1015   1016   1017   1018   2000   2001   2002   2003   2004   2005   2006   2007   2008   2009   2010   2011   2012   2013   2014   2015   2016   2017   1012   1013
5	3203	1001   1002   1003   1006   1007   1008   1009   1010   1011   1012   1013   1014   1015   1016   1017   2000   2001   2002   2003   2004   2005   2006   2007   2008   2009   2010   2011   2012   2013   2014   2015   2016   2017   2018   2019   2020   2021   2022   2023   2024   2025   2026   1000   1004   1005   1018
5	3205	1000   1001   1002   1003   1004   1005   1006   1007   1008   1009   1010   2000   2001   2002   2003   2004   2005   3000   3001   3002   3003   3004   3005   3006   3007   3008   3009   3010   3011
5	3206	1026   1035   1000   1001   1002   1003   1004   1005   1006   1007   1008   1009   1010   1011   1012   1013   1014   1015   1016   1017   1018   1019   1020   1021   1022   1023   1024   1025   1027   1028   1029   1030   1031   1032   1033   1034   1036   1037   1038   1039   1040

5	3207	1000   1001   1002   1003   1004   1005   1006   1007   2000   2001   2002   2003   2004   2005   2006   2007   2008   2009   2010   2011   2012   2013   2014   3000   3001   3002   3003   3004   3005   3006
5	3301	1000   1001   1002   1003   1004   1005   1006   1007   1008   1009   1010   1011   1012   1013   1014   1015   1016   1017   1018   1019   1020   1021   1022   1023   1024   1025   1026   2000   2001   2002   2003   2004   2005   2006   2007   2008   2009   2010   2011   3000   3001   3002   3003   3004   3005   3006   3007   3008   3009   3010
5	3302	1026   1027
5	3502	1000   1001   1002   1003   1004   1005   1006   1007   1008   1010   1011   1012   1013   1014   1015   1016   1017   1018   1019   1020   1021   1022   1023   1024   1025   2003   2004   2005   2006   2007   2008   2009   2010   2011   2012   2013   2014   2015   2016   2017   2018   2019   2020   2021   2022   2023   2001   2002   2024   2025   2000
5	3704	1000   1001   1002   1003   1004   1005   1006   2015   4000   4001   4002   4003   4004   4005   4006   4010   4013   4014   4015   4016

**F. DISTRICT SIX shall consist of: in Mobile Division, Mobile County:**

<b>Council District</b>	<b>2020 Census Tract</b>	<b>2020 Census Blocks</b>
6	3606	1001   1002   1003   1004   1005   1006   1007   1008   1009   1010   1011   1012   1013   1014   1015   1016   1017   1018   1019   2000   2001   2002   2003   2004   2005   2006   2007   2008   2009   2010   2011   2012   2013   2014   2015   2016   3000
6	3607	1000   1001   1002   1003   1004   1005   1006   1007   1008   1009   1010   1011   1012   2001   2002   2003   2004   2005   2006   2007   2008   2009   2013   3002   3003   3004   3005   3006   3007   3009   3011   2000   2010   2011   2012   3000   3001   3008   3010
6	3703	1000   1001   1005   1006   1009   1011   2000   2001   2002   2003   2004   2005   2006   2007   2008   2009   2010   2011   2012   2013   1002   1003   1004   1007   1008   1010   1012
6	3704	2000   2001   2002   2003   2004   2005   2006   2007   2008   2009   2010   2011   2012   2013   2014   2016   2017   2018   2019   2020   3000   3001   3002   3003   3004   3005   3006   3007   3008   3009   3010   3011   3012   3013   3014   3015   3016   3017   3018   3019   3020   3021   3022   3023   3024   3025   3026   3027   3028   3029   3030   3031   4007   4008   4009   4011   4012
6	3705	2004   2007   3003   3004   3005   3006   3008   2002   2003   2005   2006   1001   1002   1003   1005   1006   1007   1008   1009   1010   1011   2000   2001   3000   3002   1000   1004   3001   3007

6	3706	2004   2005   2007   2008   2011   2012   2014   2015   1000   1001   1002   1003   1004   1005   1006   1007   1008   1009   1010   1011   2000   2001   2002   2003   2006   2009   2010   2013
6	3708	1000   1001   1002   1003   1004   1005   1006   1007   1008   1009   1010   1011   1012   2002   2003   2004   2006   2007   2008   3001   3003   3007   2000   2001   2005   2009   3000   3002   3004   3005   3006
6	3711	1014   2000   2001   2002   2003   2004   2005   2006   2007
6	6409	1000
6	6411	1009   3000   3001   3002   3011
6	6802	1002   1003   1000   3006   3013   3034
6	6804	2001   2009   2014   2015

**G. DISTRICT SEVEN shall consist of: in Mobile Division, Mobile County:**

Council District	2020 Census Tract	2020 Census Blocks
7	2700	2001   2012
7	3302	2000   2001   2002   2003   2004   2005   2006   2007   2008   2009   3000   3001   3002   3003   3004   3005   3006   3007   3008   3009   3010   3011   3012   3013   3014   3015   3016   3017   3018   3019   3020   3021   3022   3023   3024   3025   3026   3027   3028   3029   3030   3031   3032   3033   3034
7	3402	2012   2013   3000   3001   3002   3003
7	3404	1001   1002   1003   1004   1005   1006   1011   1012   1013   1014   1015   1016   1017   1018   1019   1020   1021   1022   1023   1024   1025   1026   1027   1028   1029   1030   1035   1036   1037   1000   1007   1008   1009   1010   1031   1032   1033   1034
7	3405	1000   1001   1002   1003   1004   1005   1006   1007   1008   1009   1010   1011   1012   1013   1014   1015   1016   1017   1018   1019   1020   1021   1022   1023   1024   1025   1026   1027   1028   1029   1030   1031   1032   1033   1034
7	3406	1002   1003   1005   1009   1011   2000   2001   2002   2003   2004   2005   2006   2007   2008   2009   2010   2011   2012   2013   2014   2015   2016   2017   2018   2019   2020   2021   1000   1001   1004   1006   1007   1008   1010   3000   3001   3002   3003
7	3408	1000   1002   1003   1004   1005   1006   1007   1008   1009   1010   1011   1012   1013   1014   1015   1016   2000   2001   2002   2003   2004   2005   2006   2007   2008   2009   2010   2011   2012   3000   3001   3002   3003   3004   3005   3006   3007   3008   3009   3010   3011   3012   3013   3014   3015   3016   3017   3018   1001

7	3410	1007   1016   1017   2002   2003   2004   2005   2007   2008   2009   2010   2011   2012   2013   2018   2028   2029   2030   1008   1009   1010   1011   1012   1013   1006   2000   2001   2006
7	3501	2001   2004   2006   2009   2010   2012   2014   2016   2018   2022   2023   2026   2027   2028   2029   2030   2031   2032   2033   2034   3009   3010   3011   3012   1000   1001   1002   1003   1004   1005   1006   1007   1008   1009   1010   1011   1012   1013   1014   1015   1018   2000   2002   2003   2005   2007   2008   2011   2013   2015   2017   2019   2020   2021   2024   2025   3000   3001   3002   3003   3004   3005   3006   3007   3008   1016   1017   1019   1020   1021   1022
7	3502	1009
7	3602	3001   3002   3003   3004   1000   1001   1002   1003   1004   1005   1006   1007   1008   1009   2000   2001   2002   2003   2004   2005   2007   2008   2009   2010   2011   2014   2015   2016   3000   2006   2012   2013
7	3606	1000
7	3608	1006   1013   1000   1001   1002   1003   1004   1005   1007   1008   1009   1010   1011   1012   1014   1015   1016   1017   1018   1019   1020   1021   1022   1023   1024   1025   1026   1027   1028   1029
7	6402	1008   1018   1023   1024   1025   1026   1027   1049   1050   1051   1052   1053   1054   1055   1056   1057   3026   1001   1002   1003   1004   1005   1006   1007   1009   1010   1011   1012   1013   1014   1015   1016   1017   1019   1020   1021   1022   1028   1029   1030   1031   1032   1033   1034   1035   1036   1037   1038   1039   1040   1041   1042   1043   1044   1045   1046   1047   1048   3006   3018   3020   3023
7	6403	2000   2003   2005   2015   2016   2027   2033   1000   1005   1006   1007   1008   1011   1012   1013   1014   1015   1016   1021   1022   1023   1024   1025   1026   1027   1028   1029   1030   1031   1032   1033   1034   2017   2029   2004   2008   2009   2010
7	6409	1001   1019   3000   3001   3002   3003   3004   3005   3006   3007   3008   3009   3010   3011
7	6411	1004   1005   1006   1007   1012   2000   2001   2010   2011   2012   2013   3007   4000   4001   4002   4003   4004
7	980000	1002   1004   1005   1006   1007   1008   1000   1001   1003

SECTION TWO: The Council finds that each of the above-described districts is formed of contiguous, and to the extent reasonably possible, compact territory.

SECTION THREE: The Council finds that each district contains as nearly as is reasonable the same population.

SECTION FOUR: A map showing the boundaries of these council districts is attached hereto and incorporated herein by reference.

SECTION FIVE: This Ordinance shall become effective upon its adoption and publication as required by law and shall apply to the first regular election held more than six months after it becomes effective and to all municipal elections, regular or special, held after the first regular election.

ADOIPTED:

---

CITY CLERK

# RE-DISTRICTING DRAFT

## CITY OF MOBILE

- ★ Council Person Address
  - Current City Council Districts
- District 1
  - District 2
  - District 3
  - District 4
  - District 5
  - District 6
  - District 7



Print Date: 2/8/2022

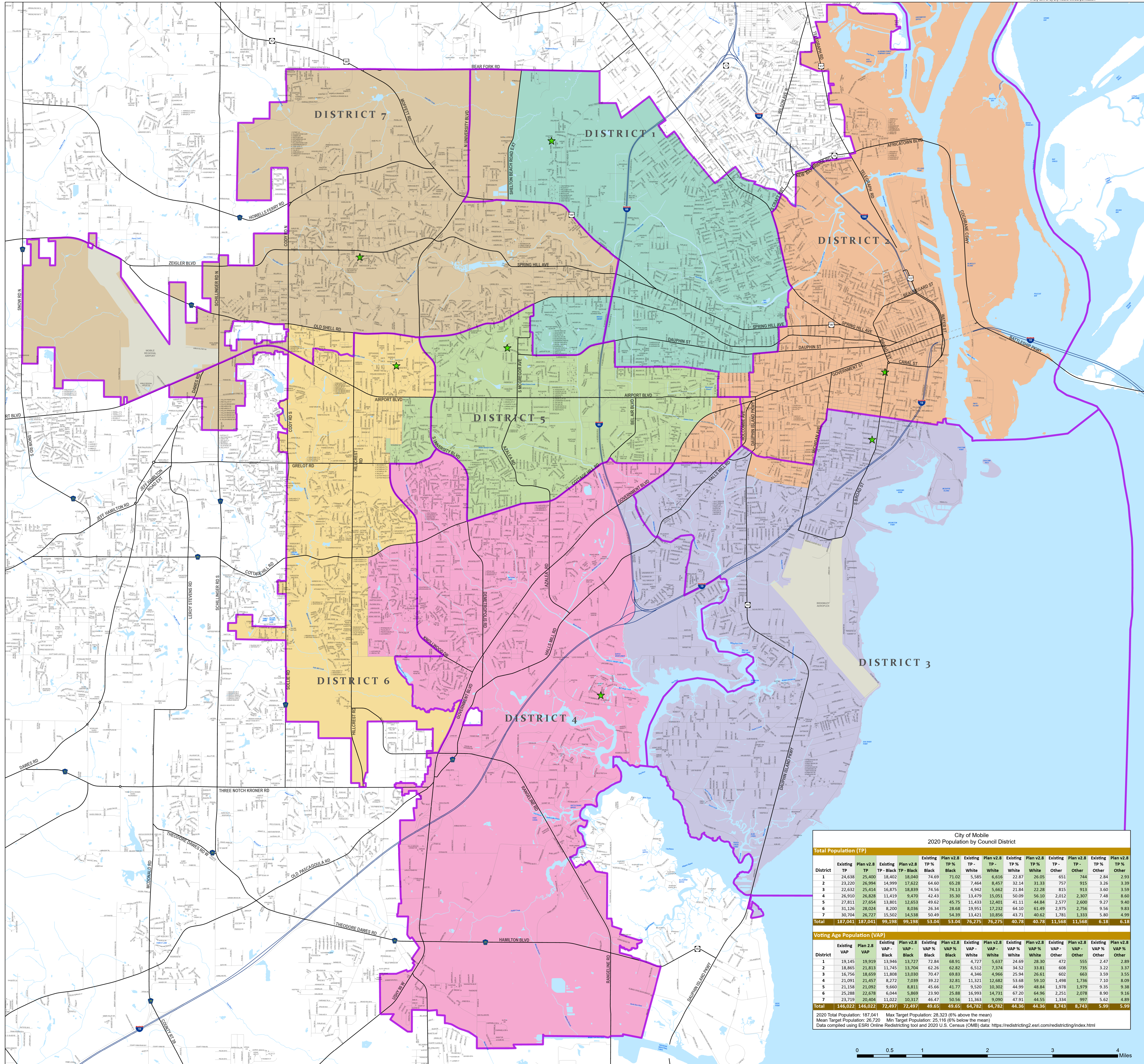
Path: L:\Re\_Districting\MapReDistricting Overall Map 3/16/21.aprx



The City of Mobile cannot verify the accuracy or currency of this map and makes no representation or warranty as to its accuracy, and in particular, its accuracy as to labeling, dimensions, or placement or location of any map feature therein.

The City of Mobile makes no warranty for fitness for a particular purpose, express or implied, with respect to this map. Any use of this map accepts the same as is, with all faults, and assumes all responsibility for the use thereof and further covers and agrees to hold the City of Mobile harmless from and against any damage, loss of liability arising from any use of the map. Independent verification of all information contained on this map should be obtained by the user. The City of Mobile disclaims, and shall not be held liable for, any and all damage, loss of liability, whether direct, indirect or consequential, which arises or may arise from the map product or its use thereof by any person or entity.

The City of Mobile has copyrighted this map product, and hereby reserves all rights therein, and neither this map, nor any portion thereof, may be reproduced in any form or by any means without permission.



City of Mobile 2020 Population by Council District																
Total Population (TP)																
District	Existing		Plan v2.8		Existing		Plan v2.8		Existing		Plan v2.8		Existing		Plan v2.8	
	TP	TP	TP - Black	TP - Black	TP % Black	TP % Black	TP - White	TP - White	TP % White	TP % White	TP - Other	TP - Other	TP % Other	TP % Other		
1	24,638	25,400	18,402	18,040	74.69	71.02	5,585	6,616	22.87	26.05	651	744	2.84	2.93		
2	23,220	26,994	14,999	17,622	64.60	65.28	7,464	8,457	32.14	31.33	757	915	3.26	3.39		
3	22,632	25,414	16,875	18,839	74.56	74.13	4,942	5,662	21.84	22.28	815	913	3.60	3.59		
4	26,910	26,828	11,819	9,470	42.43	35.30	13,479	15,051	50.09	56.10	2,011	2,307	7.48	8.60		
5	27,811	27,654	13,801	12,653	49.62	45.75	11,433	12,401	41.11	44.84	2,577	2,600	9.27	9.40		
6	31,126	28,024	8,200	8,036	26.34	28.68	19,951	17,232	64.10	61.49	2,975	2,756	9.56	9.83		
7	30,704	26,727	15,502	14,538	50.49	54.39	13,421	10,856	43.71	40.62	1,781	1,333	5.80	4.99		
<b>Total</b>	<b>187,041</b>	<b>187,041</b>	<b>99,198</b>	<b>99,198</b>	<b>53.04</b>	<b>53.04</b>	<b>76,275</b>	<b>76,275</b>	<b>40.78</b>	<b>40.78</b>	<b>11,568</b>	<b>11,568</b>	<b>6.18</b>	<b>6.18</b>		
Voting Age Population (VAP)																
District	Existing		Plan v2.8		Existing		Plan v2.8		Existing		Plan v2.8		Existing		Plan v2.8	
	VAP	VAP	VAP - Black	VAP - Black	VAP % Black	VAP % Black	VAP - White	VAP - White	VAP % White	VAP % White	VAP - Other	VAP - Other	VAP % Other	VAP % Other		
1	19,145	19,919	13,946	13,727	72.84	68.91	4,727	5,637	24.69	28.30	472	555	2.47	2.89		
2	18,865	21,813	11,745	13,704	62.26	62.82	6,512	7,374	34.52	33.81	608	735	3.22	3.37		
3	16,756	18,659	11,808	13,030	70.47	69.83	4,346	4,966	25.94	26.61	602	663	3.59	3.55		
4	21,091	21,457	8,272	7,039	39.22	32.81	11,321	12,682	53.68	59.10	1,498	1,736	7.10	8.09		
5	21,158	21,092	9,660	8,811	45.66	41.77	9,520	10,302	44.99	48.84	1,978	1,979	9.35	9.38		
6	25,280	22,678	6,044	5,869	23.90	25.88	16,993	14,731	67.20	64.96	2,251	2,078	8.90	9.16		
7	23,719	20,404	11,022	10,317	46.47	50.56	11,263	9,090	47.91	44.55	1,334	997	5.62	4.89		
<b>Total</b>	<b>146,022</b>	<b>146,022</b>	<b>72,497</b>	<b>72,497</b>	<b>49.65</b>	<b>49.65</b>	<b>64,782</b>	<b>64,782</b>	<b>44.36</b>	<b>44.36</b>	<b>8,743</b>	<b>8,743</b>	<b>5.99</b>	<b>5.99</b>		

2020 Total Population: 187,041    Max Target Population: 28,323 (6% above the mean)  
 Mean Target Population: 26,720    Min Target Population: 25,116 (6% below the mean)  
 Data compiled using ESRI Online Redistricting tool and 2020 U.S. Census (OMB) data: <https://redistricting2.esri.com/redistricting/index.html>

